

Musical MIDI Accompaniment



Chord Reference Manual

This document was prepared from version 16.06 of MMA.

Bob van der Poel
Wynndel, BC, Canada

bob@mellowood.ca

June 11, 2016

Chapter 1

Chord Reference

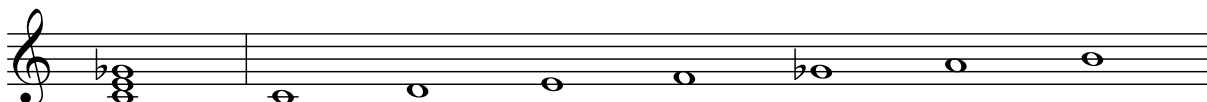
This document is a reference to the chords and scales use in *MtA*. It has been generated directly from the module `chordtable.py` in the *MtA* sources. Each section shows the chord name, a brief description, the chord notes for a “C” chord, and the associated scale tones. These chords and scales are used in *MtA* to generate chords, bass, arpeggios, arias, harmonies and scales.

In all cases you will need to preface the name with a chord pitch. For example, the reference for an 11th chord is listed simply as “11”; you would use a “C11” or “Eb11”, etc. in your *MtA* source file. Read the *MtA* Reference Guide if you don’t understand this.

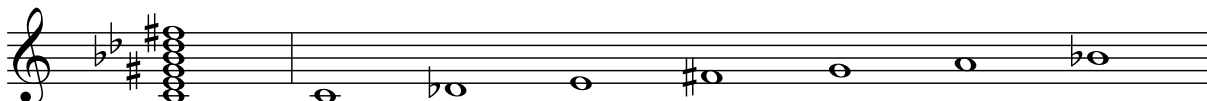
This document was prepared as a reference to verify the correctness of the chords and scales used in *MtA*. If you find an error, please let the author know.

MtA defines 95 unique chords plus 62 aliases. Chords used in *MtA* via aliased names are listed after the main name.

(b5) — Major triad with flat 5th.



+7b9#11 — Augmented 7th with flat 9th and sharp 11th.



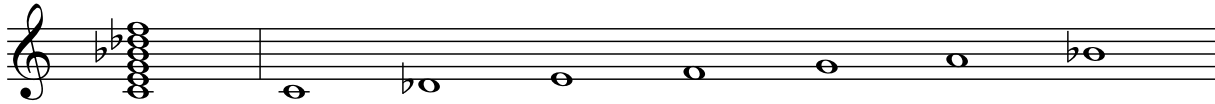
11 — 9th chord plus 11th (3rd not voiced).



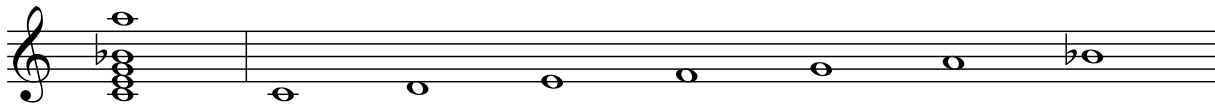
11+, 11 \sharp 5 — Augmented 11th (sharp 5).



11 \flat 9 — 7th chord plus flat 9th and 11th.



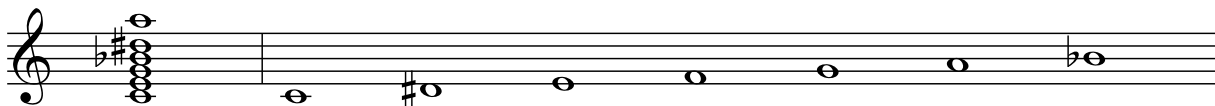
13 — 7th (including 5th) plus 13th (the 9th and 11th are not voiced).



13 \sharp 11 — 7th plus sharp 11th and 13th (9th not voiced).



13 \sharp 9 — 7th (including 5th) plus 13th and sharp 9th (11th not voiced).



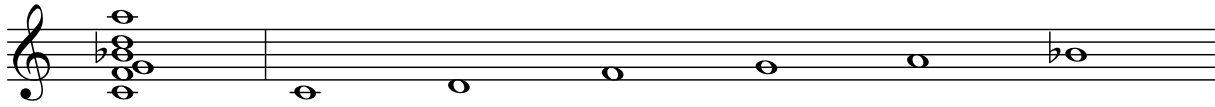
13 \flat 5 — 7th with flat 5th, plus 13th (the 9th and 11th are not voiced).



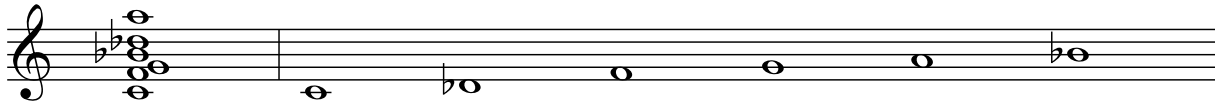
13 \flat 9, M7(add13) — 7th (including 5th) plus 13th and flat 9th (11th not voiced).



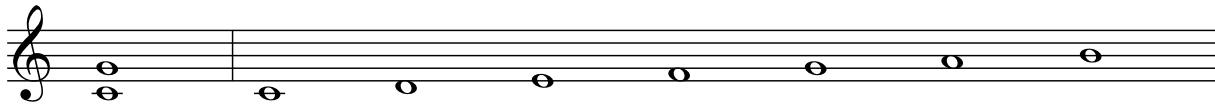
13sus, 13sus4 — 7sus, plus 9th and 13th



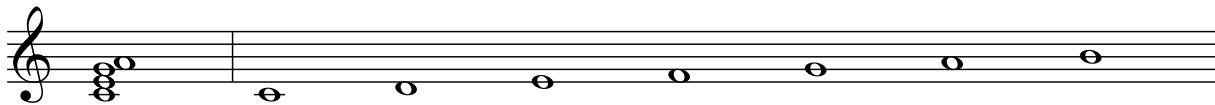
13susb9 — 7sus, plus flat 9th and 13th



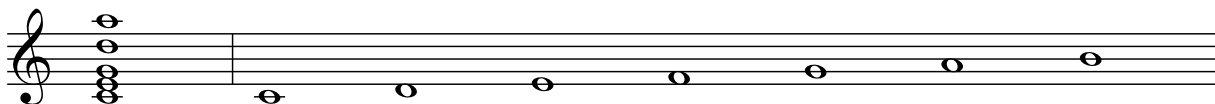
5 — Altered Fifth or Power Chord; root and 5th only.



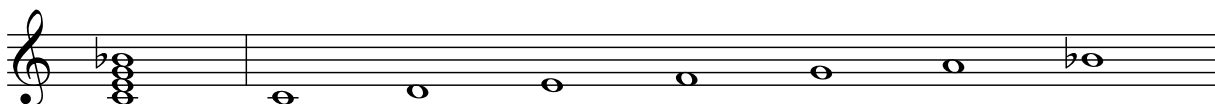
6, M6 — Major triad with added 6th.



6(add9), 69 — 6th with added 9th. This is sometimes notated as a slash chord in the form “6/9”.



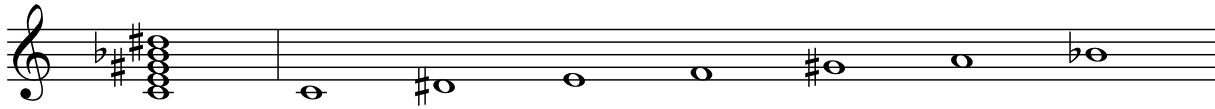
7 — 7th.



7#11 — 7th plus sharp 11th (9th omitted).



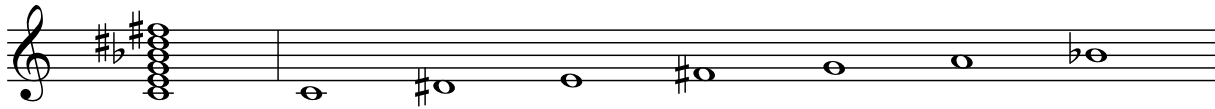
7 \sharp 5 \sharp 9 — 7th with sharp 5th and sharp 9th.



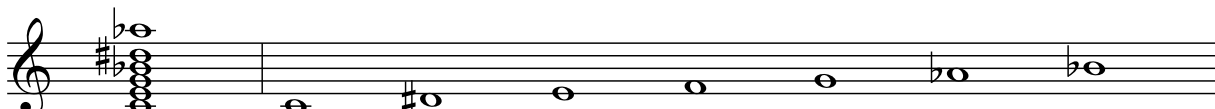
7 \sharp 9, 7+9 — 7th with sharp 9th.



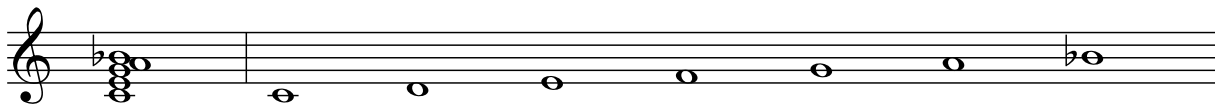
7 \sharp 9 \sharp 11 — 7th plus sharp 9th and sharp 11th.



7 \sharp 9 \flat 13 — 7th with sharp 9th and flat 13th.



7(6) — 7th with added 6th.



7(add13) — 7th with added 13th.



7 \flat 13 — 7th (including 5th) plus flat 13th (the 9th and 11th are not voiced).



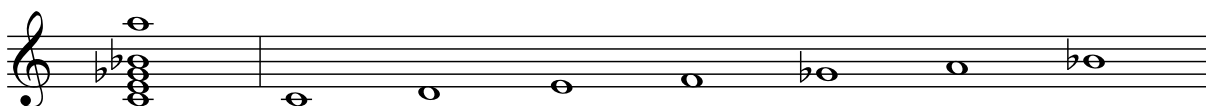
7 \flat 5, 7-5 — 7th, flat 5.



7 \flat 5 \sharp 9 — 7th with flat 5th and sharp 9th.



7 \flat 5(add13) — 7th with flat 5 and 13th.



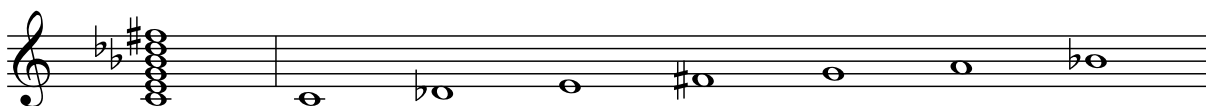
7 \flat 5 \flat 9, 7alt — 7th with flat 5th and flat 9th.



7 \flat 9, 7-9 — 7th with flat 9th.



7 \flat 9 \sharp 11 — 7th plus flat 9th and sharp 11th.



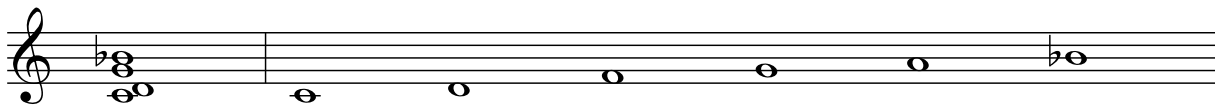
7omit3, 7(omit3) — 7th with unvoiced 3rd.



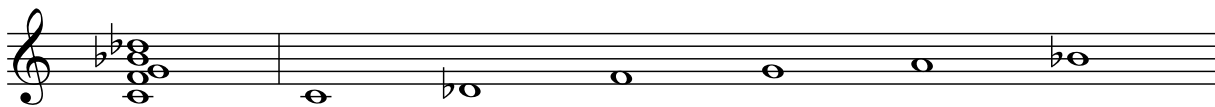
7sus, 7sus4 — 7th with suspended 4th, dominant 7th with 3rd raised half tone.



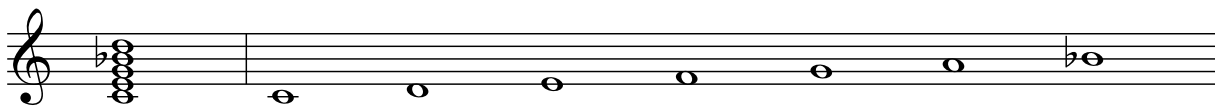
7sus2 — A sus2 with dominant 7th added.



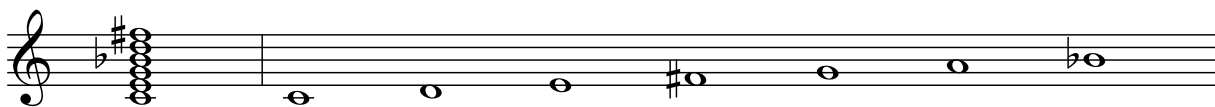
7susb9, 7b9sus — 7th with suspended 4th and flat 9th.



9 — 7th plus 9th.



9#11 — 7th plus 9th and sharp 11th.



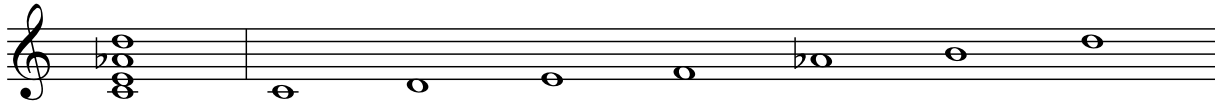
9#5, aug9, 9+, +9, 9+5 — 7th plus 9th with sharp 5th (same as aug9).



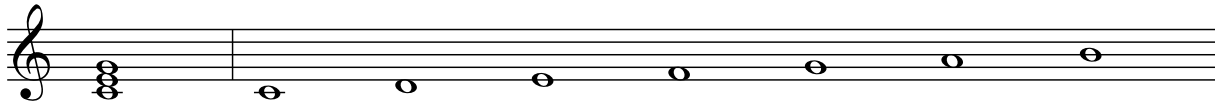
9 \flat 5, 9-5 — 7th plus 9th with flat 5th.



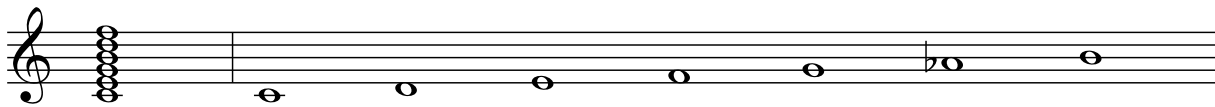
9 \flat 6 — 9th with flat 6 (no 5th or 7th).



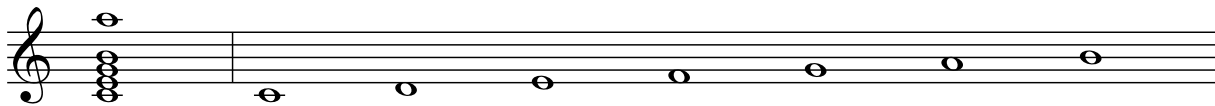
M — Major triad. This is the default and is used in the absence of any other chord type specification.



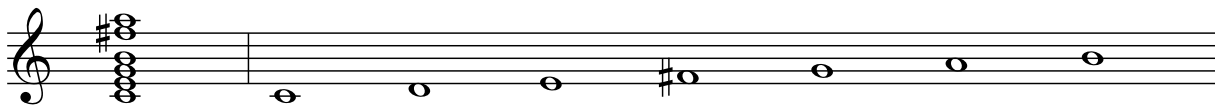
M11 — Major 9th plus 11th.



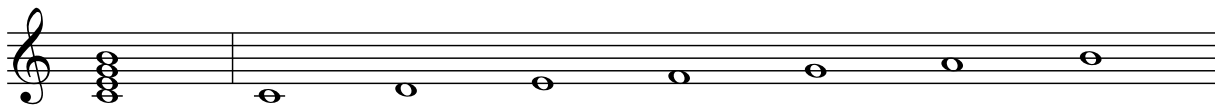
M13, maj13 — Major 7th (including 5th) plus 13th (9th and 11th not voiced).



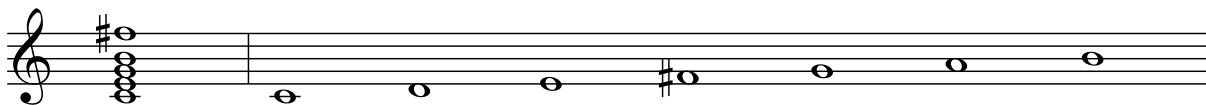
M13 \sharp 11 — Major 7th plus sharp 11th and 13th (9th not voiced).



M7, maj7 — Major 7th.



M7 \sharp 11 — Major 7th plus sharp 11th (9th omitted).



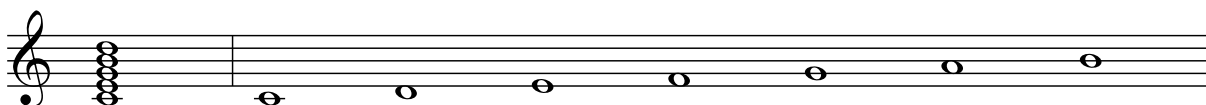
M7 \sharp 5, +M7, M7+5 — Major 7th with sharp 5th.



M7 \flat 5, M7-5 — Major 7th with a flat 5th.



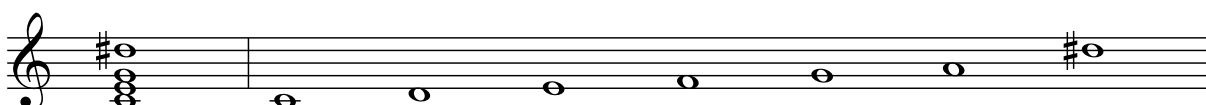
M9, maj9 — Major 7th plus 9th.



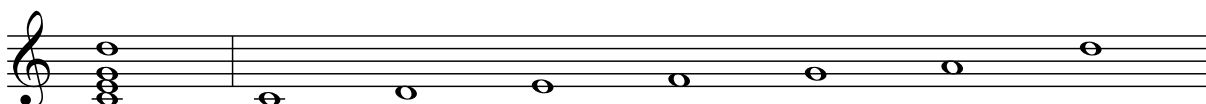
M9 \sharp 11 — Major 9th plus sharp 11th.



add \sharp 9, (add \sharp 9) — Major chord plus sharp 9th (no 7th.)



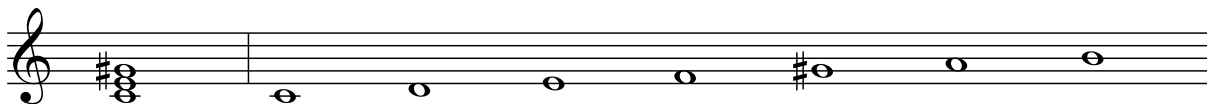
add9, (add9) — Major chord plus 9th (no 7th.)



add \flat 9, (add \flat 9) — Major chord plus flat 9th (no 7th.)



aug, +, \sharp 5 — Augmented triad.



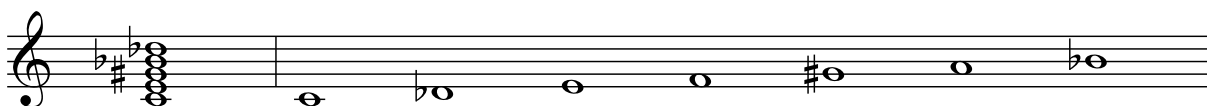
aug7, +7, 7+, 7 \sharp 5, 7+5 — An augmented chord (raised 5th) with a dominant 7th.



aug7 \sharp 9, +7 \sharp 9 — An augmented chord (raised 5th) with a dominant 7th and sharp 9th.



aug7 \flat 9, +7 \flat 9, 7 \sharp 5 \flat 9 — An augmented chord (raised 5th) with a dominant 7th and flat 9th.



aug9M7, +9M7 — An augmented chord (raised 5th) with a major 7th and 9th.



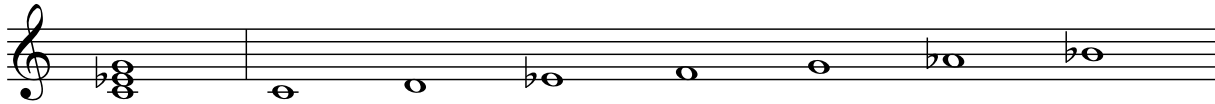
dim7, dim, $^{\circ}$ — Diminished seventh.



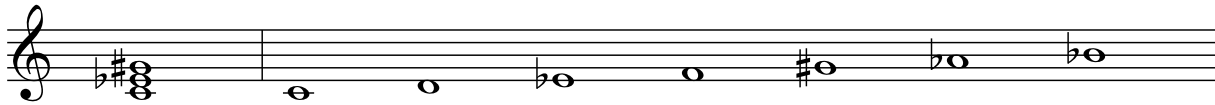
dim7(addM7), °(addM7) — Diminished triad with added Major 7th.



m — Minor triad.



m#5, m+5, m+ — Minor triad with augmented 5th.



m(sus9), m(add9) — Minor triad plus 9th (no 7th).



m+7#9 — Augmented minor 7 plus sharp 9th.



m+7b9 — Augmented minor 7 plus flat 9th.



m+7b9#11 — Augmented minor 7th with flat 9th and sharp 11th.



m11 — 9th with minor 3rd, plus 11th.



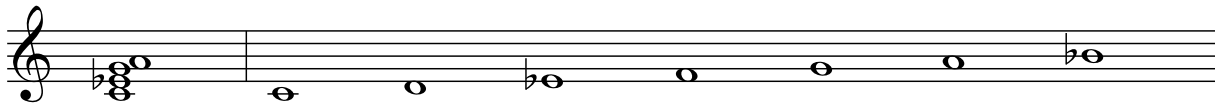
m11♭5 — Minor 7th with flat 5th plus 11th.



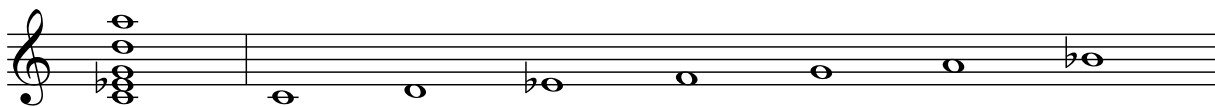
m13 — Minor 7th (including 5th) plus 13th (9th and 11th not voiced).



m6 — Minor 6th (flat 3rd plus a 6th).



m6(add9), m69 — Minor 6th with added 9th. This is sometimes notated as a slash chord in the form “m6/9”.



m7 — Minor 7th (flat 3rd plus dominant 7th).



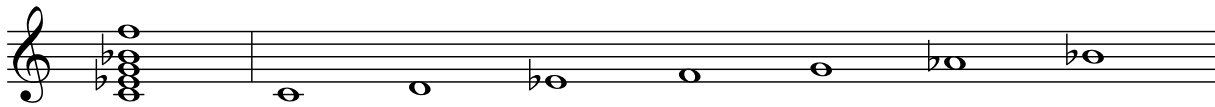
m7[#]5 — Minor 7th with sharp 5th.



m7[#]9, m7([#]9) — Minor 7th with added sharp 9th.



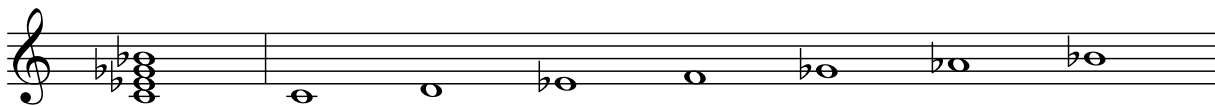
m7(add11) — Minor 7th plus 11th.



m7(add13) — Minor 7th plus 13th.



m7^b5, m7-5, ø — Minor 7th, flat 5 (aka 1/2 diminished).



m7^b5^b9 — Minor 7th with flat 5th and flat 9th.



m7^b9, m7(^b9) — Minor 7th with added flat 9th.



m7 \flat 9 \sharp 11 — Minor 7th plus flat 9th and sharp 11th.



m7omit5, m7(omit5) — Minor 7th with unvoiced 5th.



m7sus4, m7sus — Minor suspended 4th, minor triad plus 4th and dominant 7th.



m9 — Minor triad plus 7th and 9th.



m9 \sharp 11 — Minor 7th plus 9th and sharp 11th.



m9 \flat 5 — Minor triad, flat 5, plus 7th and 9th.



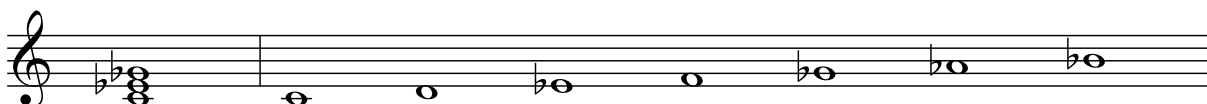
mM7, m(maj7), m+7, min(maj7), min \sharp 7, m \sharp 7 — Minor Triad plus Major 7th. You will also see this printed as “m(maj7)”, “m+7”, “min(maj7)” and “min \sharp 7” (which *MuA* accepts); as well as the *MuA* invalid forms: “-(Δ 7)”, and “min \flat 7”.



mM7(add9) — Minor Triad plus Major 7th and 9th.



m \flat 5, m(\flat 5), \circ 3, dim3 — Minor triad with flat 5th (aka dim).



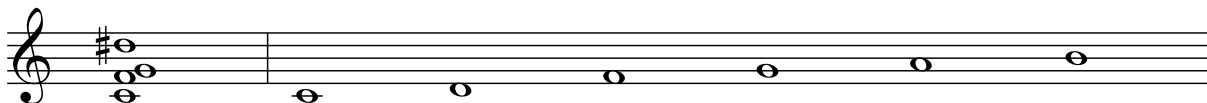
msus4, msus — Minor suspended 4th, minor triad plus 4th.



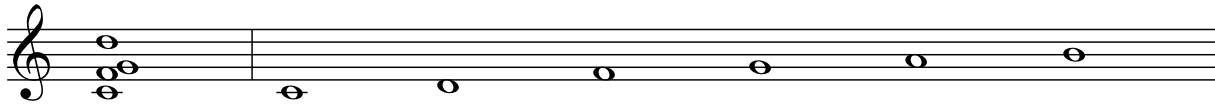
omit3add9, omit3(add9) — Triad: root, 5th and 9th.



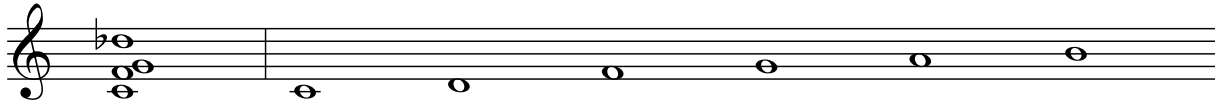
sus(add \sharp 9) — Suspended 4th, major triad with the 3rd raised half tone plus sharp 9th.



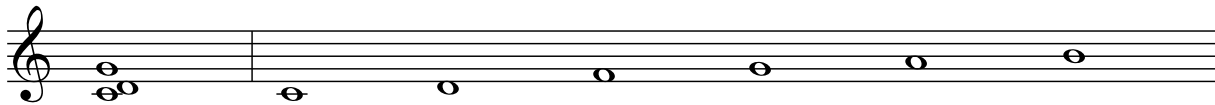
sus(add9) — Suspended 4th, major triad with the 3rd raised half tone plus 9th.



sus(add \flat 9) — Suspended 4th, major triad with the 3rd raised half tone plus flat 9th.



sus2 — Suspended 2nd, major triad with the major 2nd above the root substituted for 3rd.



sus4, sus — Suspended 4th, major triad with the 3rd raised half tone.



sus9, 9sus, 9sus4 — 7sus plus 9th.



Index of Chords

| | | | |
|-------------------------|--------------------------|--------------------------|--------------------------|
| #5 10 | 7b5b9 6 | 9sus4 16 | m 11 |
| (b5) 2 | 7b5#9 6 | 9sus 16 | mb5 15 |
| (addb9) 10 | 7b5(add13) 6 | M 8 | m#5 11 |
| (add#9) 9 | 7b9 6 | M11 8 | m#7 15 |
| (add9) 9 | 7b9#11 6 | M13 8 | m(b5) 15 |
| +7b9#11 2 | 7b9sus 7 | M13#11 8 | m(add9) 11 |
| +7b9 10 | 7#11 4 | M6 4 | m(maj7) 15 |
| +7#9 10 | 7#5b9 10 | M7 8 | m(sus9) 11 |
| +7 10 | 7#5#9 5 | M7b5 9 | m+5 11 |
| +9M7 10 | 7#5 10 | M7#11 9 | m+7b9 11 |
| +9 7 | 7#9 5 | M7#5 9 | m+7b9#11 11 |
| +M7 9 | 7#9b13 5 | M7(add13) 3 | m+7#9 11 |
| + 10 | 7#9#11 5 | M7+5 9 | m+7 15 |
| 11 2 | 7(6) 5 | M7-5 9 | m+ 11 |
| 11b9 3 | 7(add13) 5 | M9 9 | m11 12 |
| 11#5 3 | 7(omit3) 7 | M9#11 9 | m11b5 12 |
| 11+ 3 | 7+5 10 | ø 13 | m13 12 |
| 13 3 | 7+9 5 | °(addM7) 11 | m6 12 |
| 13b5 3 | 7+ 10 | °3 15 | m6(add9) 12 |
| 13b9 3 | 7-5 6 | ° 10 | m69 12 |
| 13#11 3 | 7-9 6 | addb9 10 | m7 12 |
| 13#9 3 | 7alt 6 | add#9 9 | m7b5 13 |
| 13sus 4 | 7omit3 7 | add9 9 | m7b5b9 13 |
| 13susb9 4 | 7sus 7 | aug 10 | m7b9 13 |
| 13sus4 4 | 7susb9 7 | aug7 10 | m7b9#11 14 |
| 5 4 | 7sus2 7 | aug7b9 10 | m7#5 13 |
| 6 4 | 7sus4 7 | aug7#9 10 | m7#9 13 |
| 6(add9) 4 | 9 7 | aug9M7 10 | m7(b9) 13 |
| 69 4 | 9b5 8 | aug9 7 | m7(#9) 13 |
| 7 4 | 9b6 8 | dim3 15 | m7(add11) ... 13 |
| 7b13 5 | 9#11 7 | dim7 10 | m7(add13) ... 13 |
| 7b5 6 | 9#5 7 | dim7(addM7) 11 | m7(omit5) 14 |
| | 9+5 7 | dim 10 | m7-5 13 |
| | 9+ 7 | | m7omit5 14 |
| | 9-5 8 | | m7sus4 14 |

| | | | | | | | |
|--------------------------------------|----|--------------------------------------|----|---|----|-----------------------|----|
| m7sus | 14 | maj13 | 8 | msus | 15 | sus(add9) | 16 |
| m9 | 14 | maj7 | 8 | omit3(add9) .. | 15 | sus2 | 16 |
| m9\flat5 | 14 | maj9 | 9 | omit3add9 ... | 15 | sus4 | 16 |
| m9\sharp11 | 14 | min\sharp7 | 15 | sus(add\flat9) ... | 16 | sus9 | 16 |
| mM7 | 15 | min(maj7) | 15 | sus(add\sharp9) ... | 15 | sus | 16 |
| mM7(add9) .. | 15 | msus4 | 15 | | | | |